

PORTFOLIO

20
19

kamonkey.com

Jesus Maldonado

KAMonkey / Marketing Specialist + Graphic & Production Artist

PRINT

CLIENT/PROJECT
PARKER HOUSE
FURNITURE



I have 18 years' experience working directly with print design and production, from initial concept, to prepress, to final print.

As the Marketing Manager for Parker House Furniture for 15 years, I not only developed the full Marketing Department, but produced a large variety of POP and trade show materials, From standard multi-page catalog sheets, large format display boards, to full length banners.

Manipulated photography and produced custom hand drawn vector artwork as needed to properly promote product information and understanding.



PLATINUM ACCESS SYSTEMS, INC.

PA1600BL-SL
Installation Instructions and Safety Information Manual:
Vehicular Gate Operator
Class I, Class II, Class III, and Class IV

TABLE OF CONTENTS

SECTION 1: Some important words on safety	Page 2
SECTION 2: Installation	Page 7
Sensors	Page 9
Inductive Loops	Page 11
Alarm Reset Switch	Page 16
Plan of Installation	Page 18
Electrical	Page 20
Limit Switch	Page 21
Motor Second	Page 22
Loop Rack	Page 25
Accessories	Page 26
Locks	Page 30
Selectable Features	Page 31
SECTION 3: Parts Diagram/Parts List	Page 32
SECTION 4: Maintenance	
SECTION 5: Troubleshooting	

Page 1

TECHNICAL SUPPORT: 855-466-8686 / 909-259-6002

SECTION 1

SAFETY INFORMATION

- WARNING** - To reduce the risk of severe injury or death to person, please follow these instructions:
1. READ AND FOLLOW ALL INSTRUCTIONS MANUAL BEFORE ATTEMPTING ANY INSTALLATION.
 2. Should never let children play with gate controls. Keep the remote control away from children.
 3. Always keep people and objects away from the gate. NO ONE SHOULD CROSS THE PATH OF THE MOVING GATE.
 4. Check and test the gate operator monthly. The gate MUST reverse on contact with a rigid object or when an object activates the non-contact sensors. After adjusting the force in the tank of force or when an object activates the non-contact sensors. After adjusting the force in the tank of force or when an object activates the non-contact sensors. After adjusting the force in the tank of force or when an object activates the non-contact sensors.
 5. The gate system MUST be maintained properly. Have a qualified service person inspect, repair or adjust your system if any unusual behavior is observed or suspected.
 6. Some components after a scheduled preventive maintenance service.
 7. DO NOT EXCEED the equipment specifications.
 8. Insure a safe and proper installation.
 9. All installation MUST have secondary protection devices against entrapment, such as edge sensors and photo beams, especially in places where the risk of entrapment is more likely to occur.
 10. Gate is for vehicles only, a separate entrance for pedestrians is required.
 11. GATE IS FOR VEHICLES ONLY, A SEPARATE ENTRANCE FOR PEDESTRIANS IS REQUIRED.
 12. SAVE THESE INSTRUCTIONS.

SAFETY DEVICES:

1. Remove the Power Harness for the control board.
2. Check that all mounting hardware of the gate operator is properly tightened.
3. Ensure that the gate moves freely.
4. Check the battery for the following:
 - Battery connections must be free of corrosion.
 - Battery voltage must be 28.5 VDC minimum (fully charged battery).
5. Reconnect the Power Harness for the control board.
6. Make sure every installation has a minimum of two safety devices (such as photo beams or loop sensors).
7. Check for Reverse Sensitivity.
8. Make sure that all areas around the gate are safe and secure.

TECHNICAL SUPPORT: 855-466-8686 / 909-259-6002

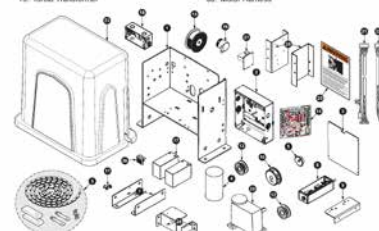
Page 2

SAFETY INFORMATION

SECTION 3

PARTS

1. Chassis
2. Electrical Enclosure
3. Enclosure Plastic Cover
4. 24V 12 HP DC Brushless Motor
5. 25 840 Chain Kit, Nickel Plated
6. Limit Switch Gear Box
7. Chassis Reinforcement Bracket (2)
8. Limit Switch Bracket
9. Limit Switch Holder
10. 41821 Sprocket
11. Cover Release Lock
12. Inter Pulley (2)
13. Breaker Switch
14. Control Board
15. Torque Transformer
16. Idler Bushing (2)
17. Battery 12V 7Ah (2)
18. 120V Receptacle
19. Alarm
20. AC Power Board
21. Limit Switch Harness
22. Power Harness
23. Operator Cover
24. Warning Striker
25. Warning Placard
26. Battery Holder (2)
27. EMI Board
28. Control Box Bracket (2)
29. Worm Gear #50
30. Motor Harness



WARNING - For Installation By Qualified Personnel Only.

Page 31

TECHNICAL SUPPORT: 855-466-8686 / 909-259-6002

PLATINUM PA1600

Platinum 1600 Br

The "New Generation" of the gate industry, the Platinum Access Systems model of gate operators is the first choice for Residential/Commercial applications. We designed one Controller board to work on all of our gate operators. All of our products are carefully inspected and mechanically tested to provide unsurpassed performance. Unique engineering innovations ensure that any needs of almost every type of gated entrance. All backed by the safety and reliability of the most advanced control board in the industry.

- Features and benefits:
- BLGOC-2000 Control board with input/output LEDs
 - Electronic reversing sensor built into control board
 - Precise synchronized movement between two gate operators using 3-wires
 - Adjustable timer from 0-60 seconds
 - Super quiet operation
 - Soft Start and Soft Stop
 - Precision limit switches
 - Surge protection
 - Alarm reset button
 - Charcoal Gray - Powder Coat chassis
 - Weatherproof polyethylene cover

Specification	Data
Manual Release	Back Drive
Gate Capacity	Optional F Maximum
Mechanical	Maximum 12" per sec
Motor	Gear ratio 1:100
Dimensions	24V DC
Main Power	120/220
Compliance	On/Off sw Built-in 24V ETL Listed

Warranty
5-Year Commercial application
7-Year Residential application



Platinum Access Systems
1725 E. Gravelley Ct. • Ontario, CA 91761
(855) 466-8686 • Fax (909) 923-7800
www.platinumaccess.com

PLATINUM PA1600

Platinum 1600 Br

The "New Generation" of the gate industry, the Platinum Access Systems model of gate operators is the first choice for Residential/Commercial applications. We designed one Controller board to work on all of our gate operators. All of our products are carefully inspected and mechanically tested to provide unsurpassed performance. Unique engineering innovations ensure that any needs of almost every type of gated entrance. All backed by the safety and reliability of the most advanced control board in the industry.

- Features and benefits:
- BLGOC-2000 Control board with input/output LEDs
 - Electronic reversing sensor built into control board
 - Precise synchronized movement between two gate operators using 3-wires
 - Adjustable timer from 0-60 seconds
 - Super quiet operation
 - Soft Start and Soft Stop
 - Precision limit switches
 - Surge protection
 - Alarm reset button
 - Charcoal Gray - Powder Coat chassis
 - Weatherproof polyethylene cover

Specification	Data
Manual Release	Back Drive
Gate Capacity	Optional F Maximum
Mechanical	Maximum 12" per sec
Motor	Gear ratio 1:100
Dimensions	24V DC
Main Power	120/220
Compliance	On/Off sw Built-in 24V ETL Listed

Warranty
5-Year Commercial application
7-Year Residential application



Platinum Access Systems
1725 E. Gravelley Ct. • Ontario, CA 91761
(855) 466-8686 • Fax (909) 923-7800
www.platinumaccess.com

PLATINUM PA5120-ACT

Platinum 5120 - Actuator Control/Arm

The "New Generation" of the gate industry, the Platinum Access Systems model of gate operators is the first choice for Residential/Commercial applications. We designed one Controller board to work on all of our gate operators.

- Features and benefits:
- BLGOC-2000 Control board with input/output LEDs
 - Electronic reversing sensor built into control board
 - Adjustable timer from 0-60 seconds
 - Super quiet operation
 - Soft Start and Soft Stop
 - Precision limit switches
 - Surge protection
 - Alarm reset button
 - Charcoal Gray - Powder Coat chassis

Specification	Data
Manual Release	Key Release
Gate Capacity	Optional F Safety
Motor	Maximum gate length 18 ft
Dimensions	Maximum gate weight 700 lbs
Main Power	90" opening in 21-25 seconds (Max @ 120)
Compliance	Instant Reversing
	Continuous Duty
	Brush
	24V DC
	15.97A x 14.5VW x 8.8V
	Power Input 100-240 VAC
	Select 115/230 VAC Single Phase
	On/Off switch
	Built-in 24VDC sensor backup / Alarm (2VDC 8.2)
	UL125 and UL 981 Compliant
	ETL Listed (Pending)

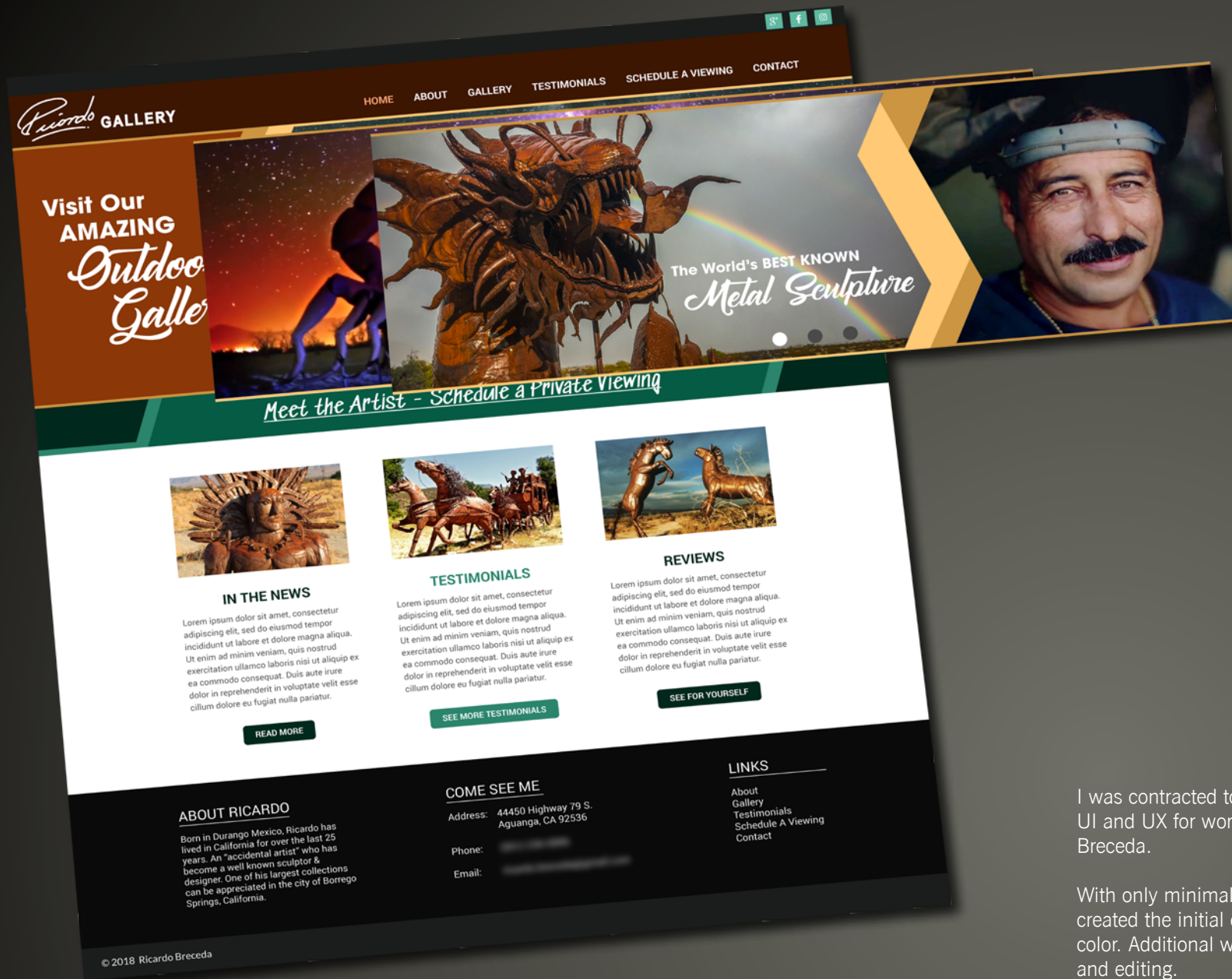
Warranty
40-Month residential and light commercial warranty



Platinum Access Systems, Inc.
1725 E. Gravelley Ct. • Ontario, CA 91761
(855) 466-8686 • Fax (909) 923-7800
www.platinumaccess.com

Developed full technical product manuals and data sheets, featuring corrected photography and custom vector images.

Additional design work includes product image composites, as well as business letterhead.



CLIENT/PROJECT
RICARDO BRECEDA

I was contracted to design the full website UI and UX for world renowned artist Ricardo Breceda.

With only minimal input from the client, I created the initial concept, to current style and color. Additional work includes image selection and editing.

CLIENT/PROJECT VARIOUS

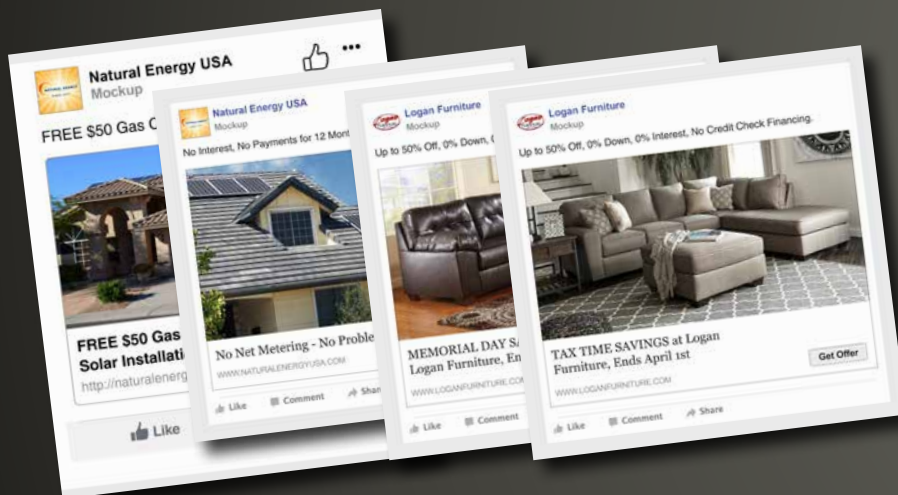


Contracted landing & web page designs for various clients.

Handling initial concept, to current style and color based on creative direction from client. Additional work includes image selection, custom design elements, recreation of logos, and typography.

DIGITAL

CLIENT/PROJECT VARIOUS



Additional projects, from landing page concepts, web page redesign, e-mail newsletters, and Facebook ads.

With creative direction from client, work has varied in scope with general design concept and message already predetermined.

DIGITAL



PERSONAL ARTWORK

DIGITAL



PERSONAL ARTWORK



Profile

A versatile Marketing professional with over 18 years' experience working in Marketing and Creative Services. A Marketing Specialist skilled in analyzing marketing data and execution of campaigns to reach targets for brand awareness. An Independent Production Artist, skilled in producing print, advertising, and digital graphics. Managed numerous high-value multidisciplinary projects from concept to completion.

RESUME

jm51376@yahoo.com

626-353-6470

Professional Experience

Marketing Specialist | Artist & Office Generalist

March 2012 – Present

- Ad campaign management & implementation, including analyzing and consultation.
- Communicating design vision, scope of work, and deliverable timeframes with clients and vendors.
- Developing traditional & digital marketing campaigns and product materials, including but not limited to web ads, websites, logos, postcards, flyers, spec sheets, and manuals.
- Manipulating documents and images for print and web use.
- Designing art pieces explicitly for consumer products through online Print-on-Demand retailers.
- Producing realistic photo manipulations and photo composites.

Marketing & Technical Manager, Parker House Furniture – Chino, CA

May 2001 – July 2016

- Managed, trained, and inspired the in-house marketing and creative services team.
- Traffic management, creative direction, and conception of all promotional and POP materials.
- Oversaw all photography selection, catalog and sample creation, and assembly instruction from concept, through prepress, to print.
- Produced simple-to-complex marketing pages, banners, e-newsletters, and large format sales tools for trade shows, including for use at nationwide retailers.
- Developed and edited mass mailing letters, product data sheets, and product romance copy.
- Supervised the marketing material mail center, reviewing inventories and sample ordering.
- Designated and managed technical and print vendors, reviewing all costing and budgets.
- Generated and preserved all digital assets, including distribution to vendors.
- Involved in product development, reviewing pricing, design, construction, and features.
- Collaborated directly with international manufacturers regarding product and design.
- Managed the processing of all product data sets and cost centers, including auditing.
- Built and implemented custom reporting tools, costing templates, and complex reports within the ERP and MS Excel.
- Created and managed the main-website and multiple sub-websites for twelve years.
- Oversaw all computer and network administration, implementation, and repair.
- Handled procurement of all company supplies, office equipment, and marketing assets; directly involved in receipt, processing disbursement, and inventory control.

Core Competencies

- Project & Campaign Management
- High-level Multitasker and Generalist
- Staff Development and Leadership
- Custom Reporting Creation
- Promotional Material Creation
- Strong Vendor Relationships

Education

Citrus College - Glendora, CA

Associate of Arts Degree in Fine Arts

Additional Skills

- Proficient in Adobe Creative Suite (Photoshop, Illustrator, InDesign)
- Proficient in MS Office Suite
- Basic website design and administration (HTML, WordPress, PHP, CSS)
- Local network administration and setup
- PC setup and maintenance
- Bilingual, Spanish and English